

ALL INFORMATION SUBJECT TO CHANGE WITHOUT NOTICE

**\*\*\*PLEASE SHARE THIS INFORMATION WITH ALL DRIVERS, CREW MEMBERS, TRUCK DRIVERS AND TEAM MANAGERS\*\*\***

**LOAD IN PARKING: Tuesday, June 4, starting @ 6:30pm.**

**Load in/parking:** The paddock will be open to DMTD participants on June 4. Pit lane will be open to setup.

**Hours:** Open track/open pit lane (8:30am-4:30pm, break for lunch noon-1pm)

**CLASSROOM:** Our classroom for this event will be in room above the Pagoda Grill.

**Registration:** will start at 7am and end promptly at 7:55am Wednesday, June 5 in the classroom.

**Drivers meeting:** will be at 8am Wednesday, June 5 in the classroom.

**Lodging:** For on-site lodging and garage information and reservations, call (434)822-7700 x101. The administration office will be open from 5:30pm until 7:00pm on June 4 for lodging check in. After 7:00pm, keys will be available at the front gate.

**TIRE SERVICE:** will be provided by Jackson Motorsports during the event. For more information and to order tires, contact Even Weintraub at [evan.weintraub@jacksonmg.com](mailto:evan.weintraub@jacksonmg.com). Evan can also be reached at (843)271-1330.

**Race control radio:** will be available from DMTD at drivers meeting to listen to race control. We will use IMSA frequency if you would like to use your radios and program them to talk as well. 461.2000 DCS 432

**Fuel:** Self-service Sunoco fuels (both leaded and unleaded) are available at the fuel island in the North Paddock for purchase by credit card only.



May be ordered and delivered to the track. Order link to follow

**Food:** The Pagoda Grill, in the paddock, will be open for breakfast and lunch from 7:00am until 2:00pm. Connie's Pub and The Oak Tree Tavern will be open for dinner from 5:00pm until 9:00pm.

**Lunch:** DMTD will provide lunch in the room upstairs from the Pagoda Grill for teams , drivers, crew, & guests and will be available 11:30am-1:30pm.

**Retail store:** The TMI Autotech retail store is located in the end of the concession building nearest to the fuel island.

**TRACK DAMAGE:** Drivers are financially responsible for any damage that they cause to race track property including, but not limited to, tire barriers, guard rails and posts. Additionally, any absorbent material used to clean up after spills or fire suppression equipment expended will be billed to the driver of the car.

**Garage rental:** will be directly through VIR. Contact VIR lodging at [lodge@virnow.com](mailto:lodge@virnow.com) or at (434) 822-7700, ext 101 - Spacious Private building available, see below:

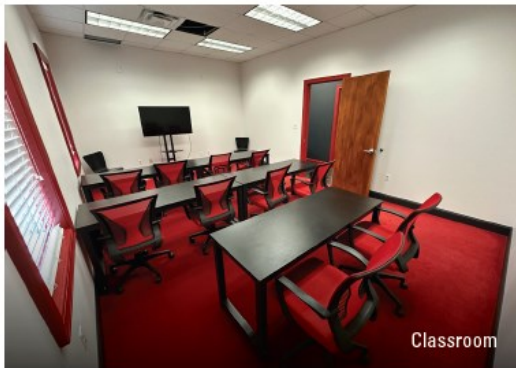
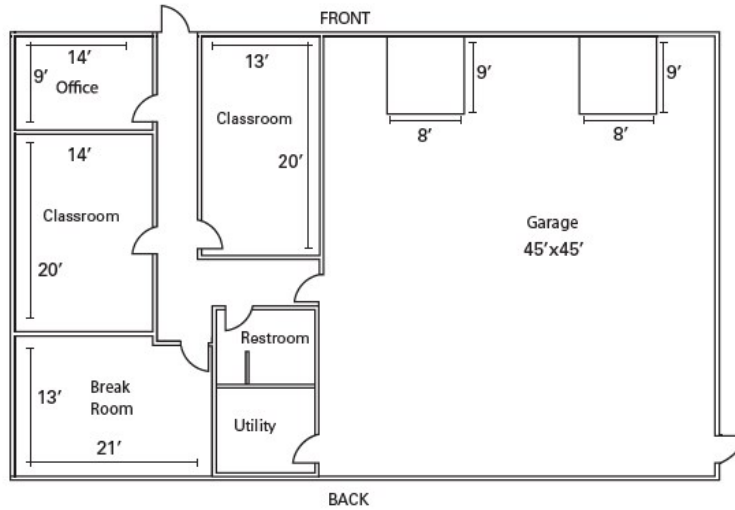
# GRID 9 GARAGE



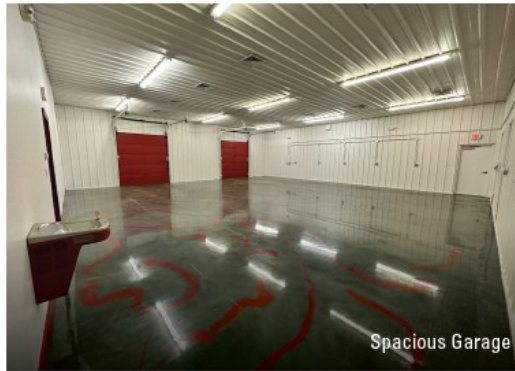
Grid 9 Garage is located in the North Paddock, between the RV hookups and pond, and available for daily/short-term rentals for the 2023 season. With two large bay doors and a private entrance this building offers offices, a breakroom and a private bathroom.

**This location is ideal for any team or private test at VIR!**

For inquiries please contact Brian Warner at 434.822.8410 EXT 111 or [bwarners@virnow.com](mailto:bwarners@virnow.com)



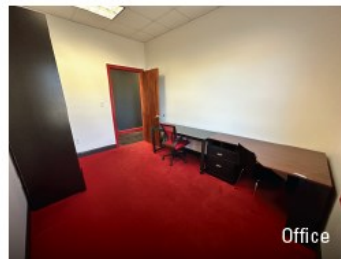
Classroom



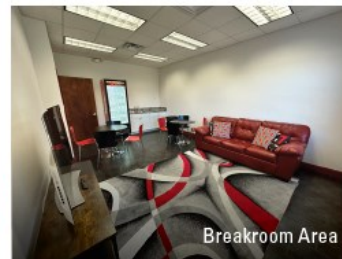
Spacious Garage



Classroom



Office



Breakroom Area